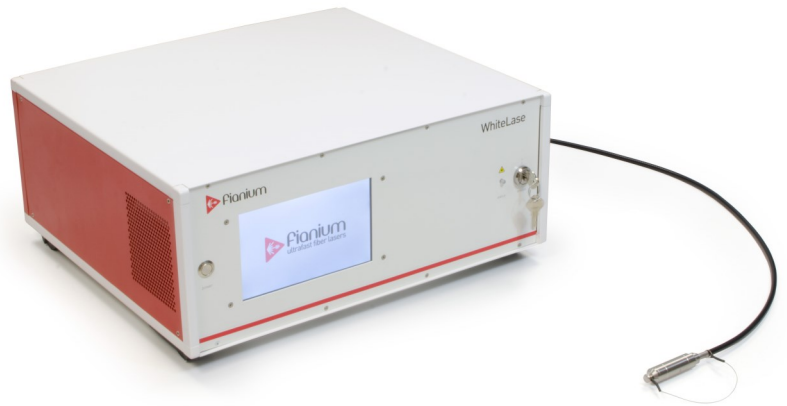


# Fianium WhiteLase

## High Power Supercontinuum Fiber Lasers

- 410-2400 nm continuous output
- Highest available output power up to 20W
- Fixed or variable repetition rate



The Fianium WhiteLase range provides a broadband single-mode output in the entire 410-2400 nm range. Operating in the MHz repetition rate range, with picosecond pulses, these systems can be utilized effectively for both steady-state and lifetime measurement. The inherently robust all-fiber design provides unsurpassed performance combined with ease-of use and low maintenance.

With a range of power and repetition rate options there is a model for almost any application. There is no need to compromise on spectrum or power because the WhiteLase SC series offers both the shortest cut-in wavelength, the most visible power and the highest total power available.

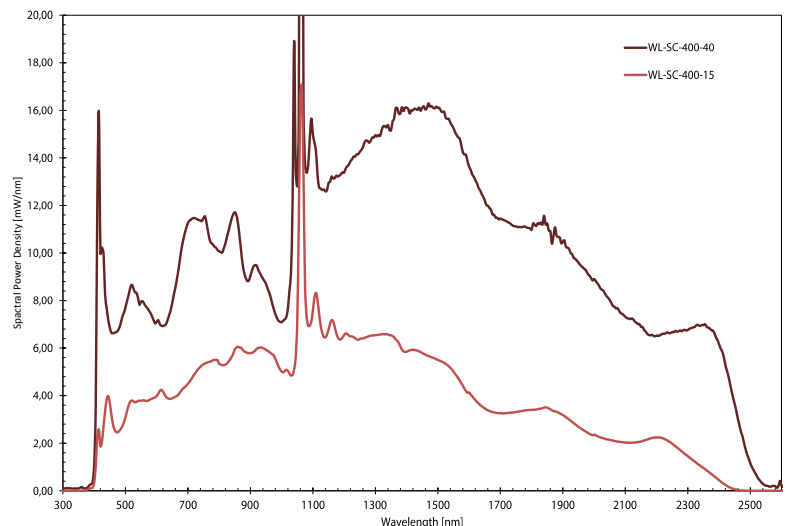
The touchscreen interface enables one-touch access to all laser settings, pre-sets, diagnostics and live system status.

The Fianium WhiteLase is ideal for research and application development where cutting-edge performance and customization is important.

### Applications

- Microscopy
- Spectroscopy
- Plasmonics effects
- Metrology

### Typical Output Spectrum



# Specifications

## Optical

	WL-SC-400-15	WL-SC-400-40
Repetition Rate	80 MHz +/-4 MHz	80 MHz +/-4 MHz
Variable Repetition Rate <sup>1)</sup>	80 MHz -100kHz (80/40/20/10/5/2/1/0.5/0.2/0.1)	80 MHz -2 MHz (80/40/20/10/5/2)
Total power	>7200 mW	20 W
Visible power (400-850 nm)	>1500 mW	>3250 mW
Total power stability		± 1.0 %
Polarization		Unpolarized
Beam output		Gaussian, single mode
Typical M <sup>2</sup> (>430 nm)		< 1.1
Output options	Collimated	SAC
Length of output fiber		1.5 m
Beam diameter	~1 mm at 633 nm ~2 mm at 1060 nm	~1.5 mm at 633 nm ~2.5 mm at 1060 nm
Beam Divergence (half angle)		< 3 mrad
Typical single mode fiber coupling efficiency (>430 nm)		>70 %

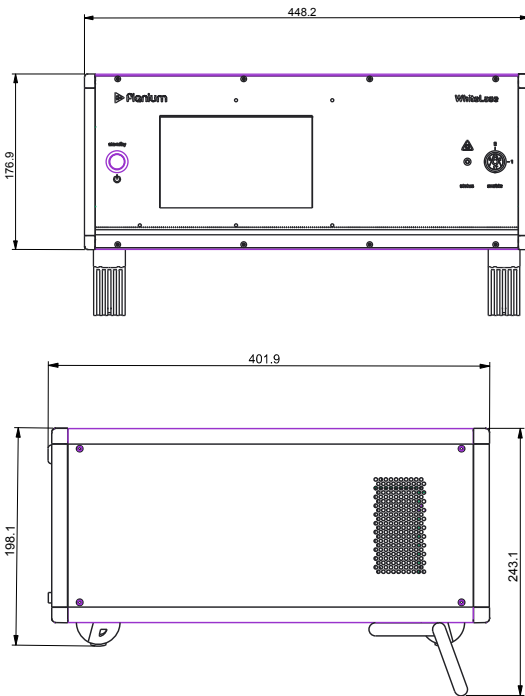
## Mechanical/Electrical

Computer Interface	USB/15 way D connector
Operation Voltage	100-240 VAC 50/60 Hz
Power Consumption	<300 W
Door Interlock Connector <sup>2)</sup>	15 way D connector
System Cooling	Air Cooled
Operation Temperature	+15°C to +30°C
Storage Temperature	-10°C to +60°C
Dimensions (WxHxL)	450x390x180 mm
Weight	18 kg (19 kg with pulse picker)
Sync (trigger) Outputs	1.NIM Compatible trigger with adjustable delay 2.Oscillator monitor photodiode
NIM Trigger Specifications	>10 ns adjustable delay in 10p s steps <10 ps timing jitter

1) Variable repetition rate is a product option

2) This laser is a Class 4 laser and is required to be connected to a door interlock/circuit

All Fianium-branded products are produced under the UK quality management system certified in accordance with the ISO 9001:2008 standard .



**NKT Photonics A/S (Headquarters)**  
 Blokken 84, 3460 Birkerød, Denmark  
 Phone: +45 4348 3900  
 Fax: +45 4348 3901

**NKT Photonics GmbH**  
 Schanzenstrasse 39, Bldg D9-D13  
 51063 Cologne, Germany  
 Phone: +49 221 99511-0  
 Fax: +49 221 99511-650

**NKT Photonics Inc.**  
 Office 23, 4400 Route 9 South,  
 Freehold, NJ 07728, USA  
 Phone: +1 732 972 9937  
 Fax: +1 732 414 4094